

247/242

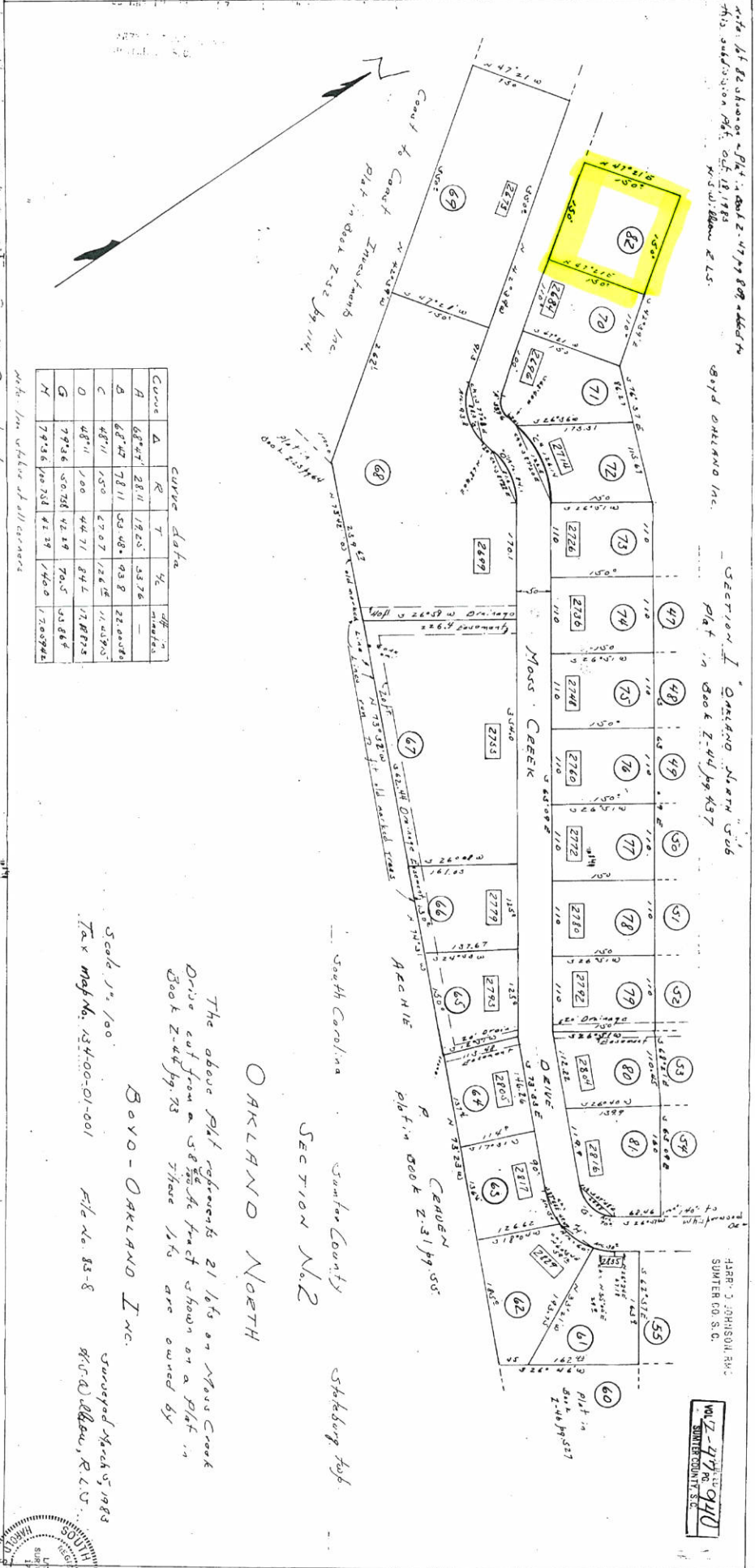
1413

Map of 82 lots on Plat in Book 2-47 pg 87 added to this subdivision plat Oct. 18, 1983 by S.W. Allen & L.S. Boyd OKLAHOMA INC.

SECTION I "OKLAHOMA NORTH" Plat in Book 2-44 pg 437

448 P. J. JOHNSON, INC. SUMNER CO. S.C.

Vol 2-47 pg 87



Curve	A	R	T	%	sq. ft.
A	68°47'	2814	1925	53.76	—
B	68°42'	7811	5348	93.8	22,000.00
C	48°11'	150	2707	12.65	1,437.05
D	48°11'	100	4471	84.4	1,188.25
E	79°36'	5078	4249	70.5	53,864
F	79°36'	10078	4249	70.5	1,200,944

Scale 1" = 100'

Tax Map No. 34-00-01-001

File No. 83-8

Surveyed March 5, 1983 by S.W. Allen, R.L.S.

BOYD - OKLAHOMA INC.

The above plat represents 21 lots on Moss Creek Drive cut from a 58 1/2 acre tract shown on a plat in Book 2-44 pg 73. These lots are owned by

OKLAHOMA NORTH

SECTION No. 2

South Carolina

Sumter County

Stablesburg job.

